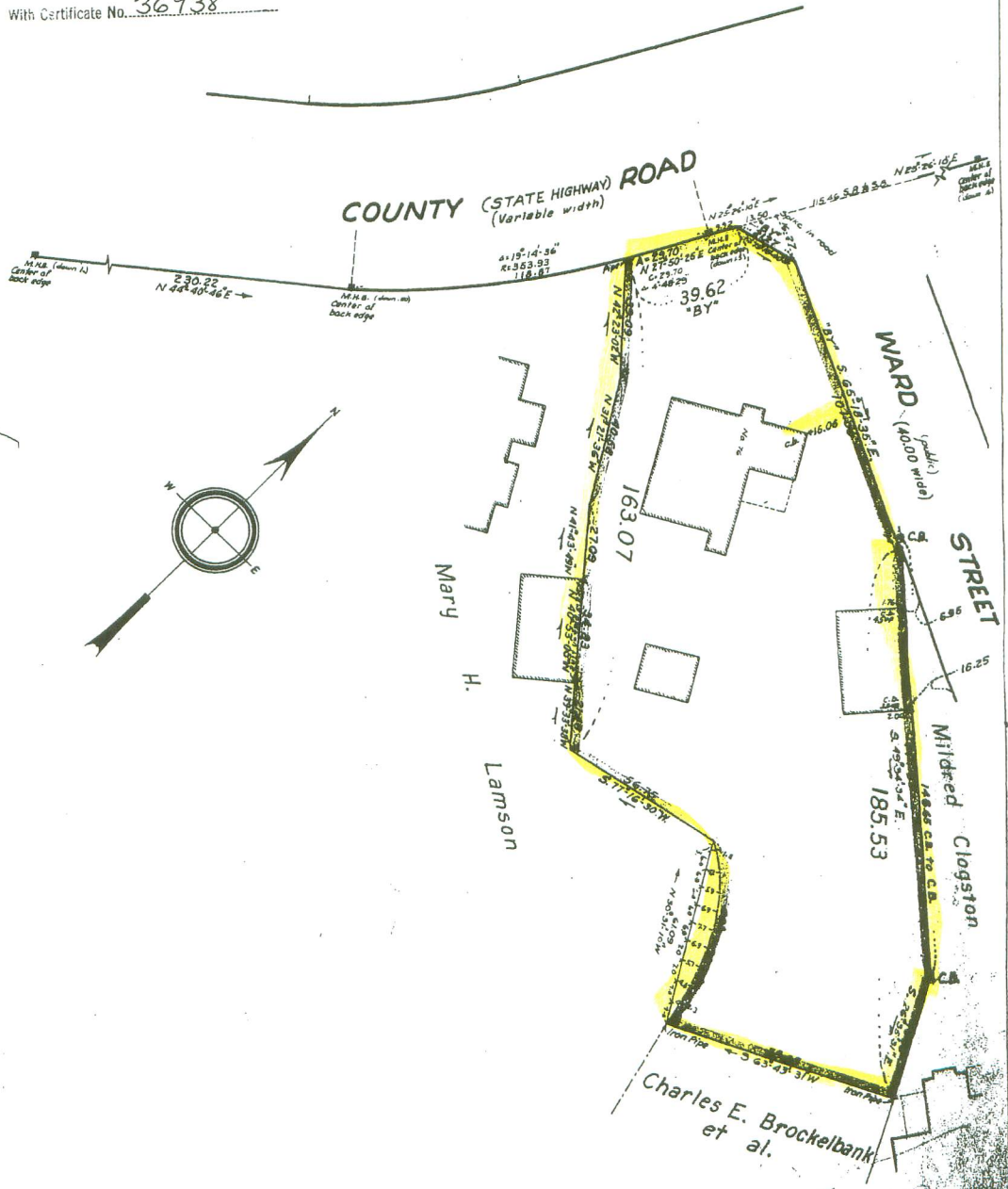


24004<sup>A</sup>

PLAN OF LAND IN IPSWICH  
Joseph Selwyn, Civil Engineer

OCTOBER 23, 1952  
JUNE 29, 1962  
March 1, 1966

Free South Registry District  
December 5, 1966  
RECEIVED AND FILED  
With Certificate No. 36938



Copy of part of plan  
filed in  
LAND REGISTRATION OFFICE  
DEC. 18, 1962  
Scale of this plan 40 feet to an inch  
C.M. Anderson, Engineer for Court